

# PROLine





The working space of each person and organisation depends on different factors. Some need more and some less storage room. Gutmann offers the right solution for everyone. We suit the working systems, the environment to you and your organisation. We support your flexible and dynamic working style. The communication between people is one point that we keep our focus on.

There is something for each need and taste. Together with you we design your new office environment to the needs and challenges of today's life.

PROLine is the workspace system that offers a great flexibility to create a suitable environment. The straight and simple design of PROLine speaks for itself. To provide an attractive overall picture, we focus our planning skills on ergonomic needs, workflow, high communication possibilities and a comfortable surrounding.

With PROLine we offer you numerous design and configuration possibilities for an unbeatable price.

# Desks

## Technical description

- height adjustable from 680-800mm
- 4-feet frame
- square tube 50x50mm / Round pipe Ø50mm
- 25mm strong decorative plate after E1
- with reflection Glare Coating (DIN 68765)



## Expansion options:

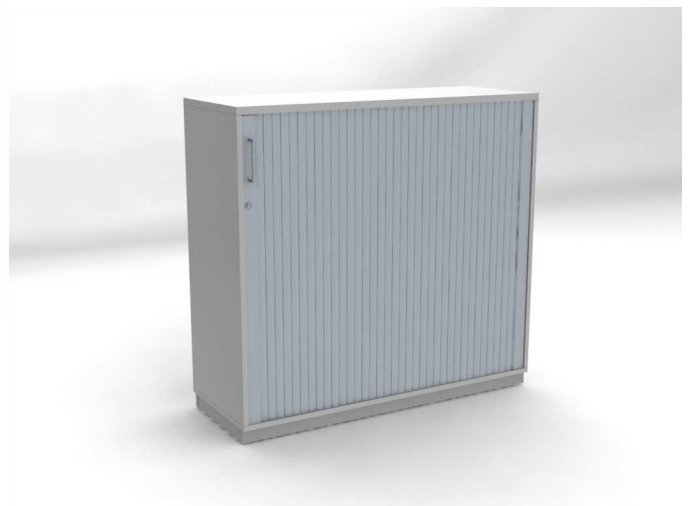
- Angle connector plates
- Cable outlet socket
- cable chain with ground adapter
- PC holder

for more information, visit our web site

# Storage room Sliding door- and horizontal roller cabinet

## Technical description

- Corpus and doors 19mm strong Melamine faced chipboard
- back wall 8mm
- 2mm ABS-edges
- 25mm shelves
- lock with 2 keys
- 2 steel handles

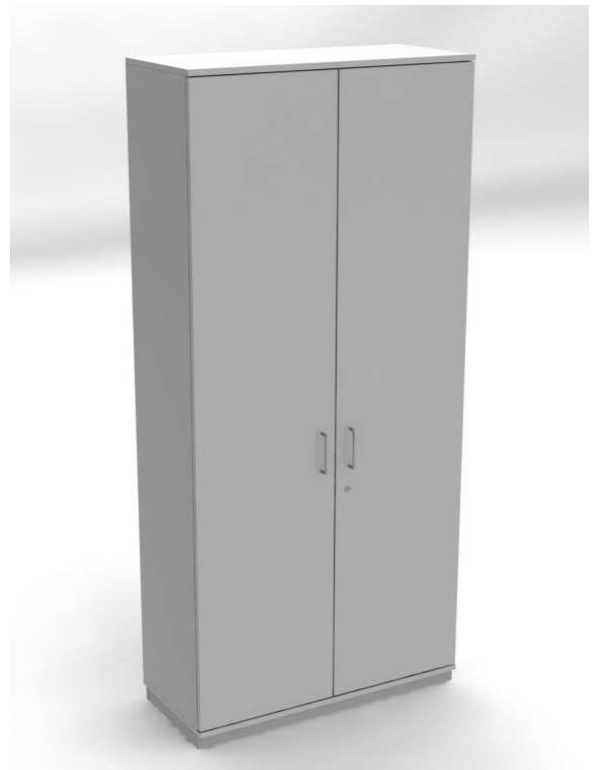
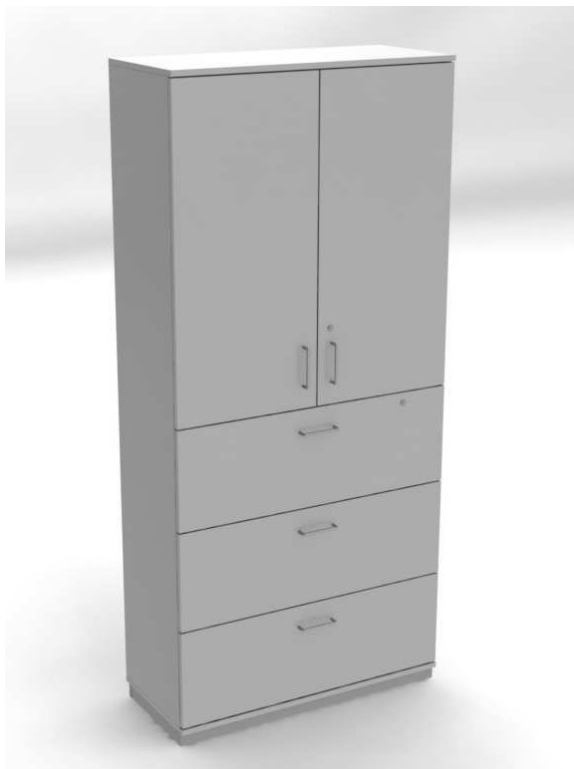


for more information, visit our web site

# Filing cabinet

## Technical description

- Corpus and doors 19mm strong Melamine faced chipboard
- back wall 8mm
- 2mm ABS-edges
- shelves 25mm thick
- lock with 2 keys
- 2 steel handles



for more information, visit our web site

# Shelf

## Technical description

- Corpus and doors 19mm strong Melamine faced chipboard
- back wall 8mm
- 2mm ABS-edges
- shelves 25mm thick



for more information, visit our web site

# Filing cabinet with hanging frames

## Technical description

- Corpus and doors 19mm strong Melamine faced chipboard
- back wall 8mm
- 2mm ABS-edges
- lock with 2 keys
- steel handles



for more information, visit our web site



# Container

## Technical description

- 19mm strong Melamine faced chipboard
- 2mm ABS-edges
- lock with and 2 keys
- steel handles
- steel drawer with pull-out stop



## Options:

- hanging frames for filing cabinet
- plate crosswise
- plate lengthwise A5
- plate lengthwise A6
- forms insert A4
- punch holder

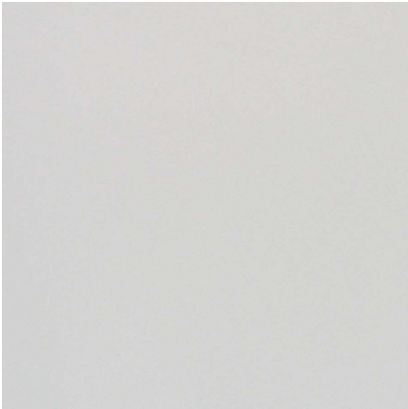
for more information, visit our web site

# Reception



# Decors and surfaces

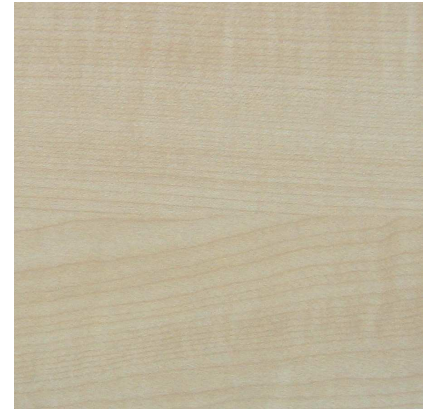
## Decors



Light Gray



Beech



Maple

## Metal surface



aluminium RAL 9006



Gutmann GmbH  
Auf Herdenen 4  
78052 Villingen-Schwenningen  
Telefon: +49 7721 80020  
Fax: +49 7721 800211  
E-Mail: [info@gutmanncorp.de](mailto:info@gutmanncorp.de)  
Internet: [www.gutmanncorp.de](http://www.gutmanncorp.de)