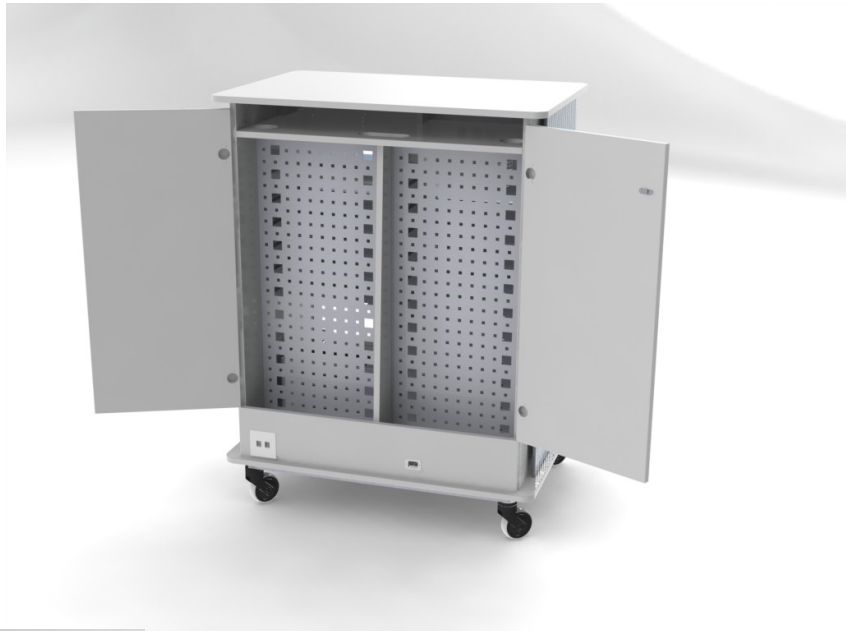


Mobile Carts for Notebooks, Netbooks & Tablets





Gutmann presents a full range of Notebook Carts as the new mobile classroom. The 2 product ranges StorageBox or StorageBoxLight support your efforts in improving the teaching environment.

What looks so simple and easy is in reality a great concept for every lesson.

Notebooks, data projector, printer, access points and other technical equipment can be safely stored and moved from one place to another. The mobile Classroom from Gutmann is a wireless teaching facility, easy to use and read within no time.

The notebook carts from Gutmann, the mobile classroom, open a totally new perspective to teachers and students regarding an interactive teaching environment. Everything that is needed in a complete computer classroom is taken care of. From the student and teacher notebook, data projector, printer, wireless LAN to an intelligent power supply, the mobile classroom systems from Gutmann cover all need and do leave nothing to be desired of.

The mobile solutions from Gutmann are flexible, user friendly, reliable and of highest quality. The right systems for our schools and universities.

SBL-12



Technical description:

- 12x metal tray
- 2x 12-way power socket
- current limiter (16A)
- 2x RJ-45 network socket
- 1x red main power cable
- 2x key
- 4x self-steering casters (2 casters can be locked)
- Lockable service hatch on the back

Dimensions (WxDxH)

- Mobile cabinet: 623x708x1300 mm
- Metal drawer: 460x403x61 mm
- Weight: 79 kg

Additional options:

- lightning protection
- sound system
incl. amplifier,
2x speakers (50 watt, 2-ways)
required space: 2-3 trays
- fan (incl. cable and protection gridd)
- drawer - required space: 1-2 trays
- handles
- foldaway side tray (height 88 cm)
- support for ½ profil cylinder lock
- charging timer
- 5 m cable revider

(Technical changes reserved)



SBL-16



Technical description:

- 16x metal tray
- 2x 12-way power socket
- current limiter (16A)
- 2x RJ-45 network socket
- 1x red main power cable
- 2x key
- 4x self-steering casters (2 casters can be locked)
- Lockable service hatch on the back

Dimensions (WxDxH)

- Mobile cabinet: 623x708x1300 mm
- Metal drawer: 460x403x61 mm
- Weight: 87 kg

Additional options:

- lightning protection
- sound system
incl. amplifier,
2x speakers (50 watt, 2-ways)
required space: 2-3 trays
- fan (incl. cable and protection gridd)
- drawer - required space: 1-2 trays
- handles
- foldaway side tray (height 88 cm)
- support for ½ profil cylinder lock
- charging timer
- 5 m cable rewinder

(Technical changes reserved)



SB-16 EPT



Technical description:

- I/O box with 2 separate power circuits
- 1x 6-way power socket for permanent power
- 1x 12-way and 1x 6-way power socket for timer-controlled charging power
- current limiter (16A)
- 16x metal tray
- 1x wooden tray - trainer notebook
- 1x metal tray - projector
- 1x wooden tray - printer
- 2x RJ-45 network socket
- 1x red main power cable
- 2x key
- 4x self-steering casters (2 casters can be locked)
- Lockable service hatch on the back

Dimensions (WxDxH)

- Mobile cabinet: 1132x690x1360 mm
- tray for trainer notebook: 460x413x133 mm
- Metal tray: 460x403x61 mm
- tray for printer: 460x413x438 mm
- tray for projector: 460x403x133 mm
- Weight: 135 kg

Additional options:

- 1 tray upgrade kit (max. 6 trays)
- printer drawer
- lightning protection
- sound system
incl. amplifier,
2x speakers (50 watt, 2-ways)
required space: 2-3 trays
- fan (incl. cable and protection gridd)
- drawer - required space: 1-2 trays
- support for ½ profil cylinder lock
- at the service back door, with integrated
- holder for the front key"
- 5 m cable rewinder

(Technical changes reserved)

SB-22



Technical description:

- 2x 12-way power socket
- current limiter (16A)
- 22x metal tray
- 2x RJ-45 network socket
- 1x red main power cable
- 2x key
- 4x self-steering casters (2 casters can be locked)
- Lockable service hatch on the back

Dimensions (WxDxH)

- Mobile cabinet: 1132x690x1360 mm
- Metal tray: 460x403x61 mm
- Weight: 137 kg

Additional options:

- 1 tray upgrade kit (max. 4 trays)
- printer drawer
- lightning protection
- sound system
incl. amplifier,
2x speakers (50 watt, 2-ways)
required space: 2-3 trays
- fan (incl. cable and protection gridd)
- drawer - required space: 1-2 trays
- support for 1/2 profil cylinder lock
- at the service back door, with integrated
- holder for the front key"
- 5 m cable rewinder

(Technical changes reserved)

SB-24 P



Technical description:

- 2x 12-way power socket
- 1x 3-way power socket
- current limiter (16A)
- 24x metal tray
- 1x wooden tray - printer
- 2x RJ-45 network socket
- 1x main power cable
- 2x key
- 4x self-steering casters (2 casters can be locked)
- Lockable service hatch on the back

Dimensions (WxDxH)

- Mobile cabinet: 1132x690x1360 mm
- Metal tray: 460x403x61 mm
- tray for printer: 460x413x373 mm
- Weight: 144 kg

Additional options:

- 1 tray upgrade kit
- printer drawer
- lightning protection
- sound system
incl. amplifier,
2x speakers (50 watt, 2-ways)
required space: 2-3 trays
- fan (incl. cable and protection grill)
- drawer - required space: 1-2 trays
- support for ½ profil cylinder lock
at the service back door, with integrated
holder for the front key
- 5 m cable rewinder

(Technical changes reserved)

SB-24 EP



Technical description:

- I/O box with 2 separate power circuits
- 1x 6-way power socket for permanent power
- 2x 12-way power socket for timer-controlled charging power
- current limiter (16A)
- 24x metal tray
- 1x wooden tray - printer
- 2x RJ-45 network socket
- 1x red main power cable
- 2x key
- 4x self-steering casters (2 casters can be locked)
- Lockable service hatch on the back

Dimensions (WxDxH)

- Mobile cabinet: 1132x690x1360 mm
- Metal tray: 460x403x61 mm
- tray for printer: 460x413x373 mm
- Weight: 147 kg

Additional options:

- 1 tray upgrade kit
- printer drawer
- lightning protection
- sound system
incl. amplifier,
2x speakers (50 watt, 2-ways)
required space: 2-3 trays
- fan (incl. cable and protection gridd)
- drawer - required space: 1-2 trays
- support for ½ profil cylinder lock
at the service back door, with integrated
holder for the front key"
- 5 m cable rewinder

(Technical changes reserved)

SB-26 EP



Technical description:

- I/O box with 2 separate power circuits
- 1x 6-way power socket for permanent power
- 2x 12-way and 1x 3-way power socket for timer-controlled charging power
- current limiter (16A)
- 26x metal tray
- 1x wooden tray - printer
- 2x RJ-45 network socket
- 1x red main power cable
- 2x key
- 4x self-steering casters (2 casters can be locked)
- Lockable service hatch on the back

Dimensions (WxDxH)

- Mobile cabinet: 1132x690x1360 mm
- Metal tray: 460x403x61 mm
- tray for printer: 460x413x243 mm
- Weight: 152 kg

Additional options:

- 1 tray upgrade kit
- printer drawer
- lightning protection
- sound system
incl. amplifier,
2x speakers (50 watt, 2-ways)
required space: 2-3 trays
- fan (incl. cable and protection gridd)
- drawer - required space: 1-2 trays
- support for ½ profil cylinder lock
at the service back door, with integrated
holder for the front key"
- 5 m cable rewinder

(Technical changes reserved)

SB-30



Technical description:

- 2x 12-way power socket
- 2x 6-way power socket
- current limiter (16A)
- 30x metal tray
- 2x RJ-45 network socket
- 1x red main power cable
- 2x key
- 4 self-steering casters (2 casters can be locked)
- Lockable service hatch on the back

Dimensions (WxDxH)

- Mobile cabinet: 1132x690x1360 mm
- Metal tray: 460x403x61 mm
- Weight: 156 kg

Additional options:

- 1 tray upgrade kit
- printer drawer
- lightning protection
- sound system
incl. amplifier,
2x speakers (50 watt, 2-ways)
required space: 2-3 trays
- fan (incl. cable and protection gridd)
- drawer - required space: 1-2 trays
- support for 1/2 profil cylinder lock
at the service back door, with integrated
holder for the front key"
- 5 m cable rewinder

(Technical changes reserved)

CM16



Technical description:

- max. placement: 16x netbook
- 2x 9-way power socket, power limiter and 7,5 m power cable
- 2x base tray with dividers
- drawer
- wheels Ø100 mm, 2 with break
- handles
- lockable roller blind with 2 handles

Dimensions: WxDxH 60x60x114 cm

Additional options:

- foldaway side tray (height 91 cm)
- support for ½ profil cylinder lock
- soft rubber wheels, 2 with break
- 5 m cable rewinderrubber roller

(Technical changes reserved)



TB16/TB32



Technical description:

TB16

- max. placement: 16x tablet & 1 printer
- 2x 9-way power socket, power limiter and 7,5 m power cable
- 1x base tray with foam mold
- shelf fixed
- drawer
- wheels Ø100 mm, 2 with break
- handles
- lockable roller blind with 2 handles

Dimensions: WxDxH 60x60x114 cm

TB32

- max. placement: 32x tablet
- 4x 9-way power socket, power limiter and 7,5 m power cable
- 2x base tray with foam mold
- drawer
- wheels Ø100 mm, 2 with break
- handles
- lockable roller blind with 2 handles

Dimensions: WxDxH 60x60x114 cm

Additional options for both models:

- foldaway side tray (height 91 cm)
- support for ½ profil cylinder lock
- soft rubber wheels, 2 with break
- 5 m cable rewriter

(Technical changes reserved)



	SBL-12	SBL-16	SB-16 EPT	SB-22
dimensions [mm]: WxDxH	623x708x1300	623x708x1300	1132x690x1360	1132x690x1360
weight [kg]	79,0	87,0	135,0	137,0
4 wheels (2 with brake)	✓	✓	✓	✓
lockable roller blind with 2 handles	✓	✓	✓	✓
service hatch on the back	✓	✓	✓	✓
side handles	✓	✓	✓	✓
metal trays	✓	✓	✓	✓
2 keys	✓	✓	✓	✓
Power socket for equipment	✓	✓	✓	✓
RJ-45 network socket	✓	✓	✓	✓
230V/16A main power cable red	✓	✓	✓	✓
intelligent permanent power circuit	x	x	✓	x
I/O box with a intelligent controlled charging circuit and a permanent circuit	x	x	✓	x
tray - trainer notebook	x	x	✓	x
tray - projector	x	x	✓	x
tray - printer	x	x	✓	x
sound system amplifier 2x50 W, 20Hz-20 k Hz, 2 speakers 3-way a´50 W	●	●	●	●
Drawer	●	●	●	●
Additional metal trays	●	x	●	●
Lightning protection	●	●	●	●

- ✓ exist
- x not exist
- optional available

	SB-24 P	SB-24 EP	SB-26 EP	SB-30
dimensions [mm]: WxDxH	1132x690x1360	1132x690x1360	1132x690x1360	1132x690x1360
weight [kg]	144,0	147,0	152,0	156,0
4 wheels (2 with brake)	✓	✓	✓	✓
lockable roller blind with 2 handles	✓	✓	✓	✓
service hatch on the back	✓	✓	✓	✓
side handles	✓	✓	✓	✓
metal trays	✓	✓	✓	✓
2 keys	✓	✓	✓	✓
Power socket for equipment	✓	✓	✓	✓
RJ-45 network socket	✓	✓	✓	✓
230V/16A main power cable red	✓	✓	✓	✓
intelligent permanent power circuit	x	✓	✓	x
I/O box with a intelligent controlled Charging circuits and a permanent circuit	x	✓	✓	x
tray - trainer notebook	x	x	x	x
Tray - projector	x	x	x	x
Tray - printer	✓	✓	✓	x
sound system amplifier 2x50 W, 20Hz-20 k Hz, 2 speakers 3-way à 50 W	●	●	●	●
Drawer	x	x	x	●
Additional metal tray	●	●	●	x
Lightning protection	●	●	●	●

- ✓ exist
- x not exist
- optional available

	CM16	TB16	TB32
dimensions [mm]: WxDxH	60x60x114	60x60x114	60x60x114
weight [kg]			
4 wheels (2 with brake)	✓	✓	✓
lockable roller blind with 2 handles	✓	✓	✓
huge service opening	✓	✓	✓
side handles	✓	✓	✓
pocket for Tablets	✗	✓	✓
shelf for Netbooks	✓	✗	✗
2 keys	✓	✓	✓
Power socket for equipment	✓	✓	✓
current limiter (16A)	✓	✓	✓
power cable 7.5m	✓	✓	✓
Drawer	✓	✓	✓
Tilt able side shelf	●	●	●
rubber roller	●	●	●

✓ exist

✗ not exist

● optional available



Gutmann GmbH
Auf Herdenen 4
78052 Villingen-Schwenningen
Phone: 07721 8002-0
Fax: 07721 8002-11
Mail: info@gutmanncorp.de
Internet: www.gutmanncorp.de